

SHAR  赛尔



FORESIGHT BEYOND THE VISION

SHARE 6100 X-PORT

61MP Full frame ortho photogrammetry camera



GPS-FREE



3-AXIS GIMBLE



FULL FRAME SENSOR



MICROSECOND LEVEL SYNCHRONIZATION



BOTH 2D AND 3D ARE WORKABLE



1.35 EXPOSURE INTERVAL



Intelligent 3 axis gimble, stable and accurate

Share 6100 X-PORT can move stably at multiple angles during the flight, no need to land for adjustment, integrated setting on Pilot, fast and accurate picture capture.

Microsecond level synchronization

During flight mission with DJI M300 RTK, the time synchronization effectively reaches the microsecond level.





GCPs-free

No need to make GCPs, just focus on flight, accomplish data acquisition efficiently, meet the efficiency requirements of large-area orthophoto operations.



High precision and clearer

61MP full-frame sensor, high efficiency and high-quality data acquisition results at the same time, easy to adapt to various scene data acquisition needs.

Lightweight body, easy to carry

Aircraft aluminum alloy body, 670G weight,
a lightweight and energy-saving payload,
reserving more power performance to improve the flying area.





Dynamic and static data acquisition

Photos and videos are all available,
one camera integrates dynamic and static data acquisition.





Fly faster with a faster shutter

The fastest speed up to 1/1250S, combined with the 1.3S exposure interval time, fully use the performance of the drone and shorten the time of data acquisition.



Applications

topographic map



river regulation



Forest plant protection

Efficiency table

DJI M300 RTK + SHARE 6100 X-PORT

resolution	altitude	speed	waypoint	route length	working area	waypoint	route length	Full-day working area
cm	m	m/s	/	m	km ²	/	m	km ²
1.5	160	14.6	38	22300	0.7	138	298000	11.9
2	213	15	30	24200	1.05	118	310000	16.3
3	320	15	30	24100	1.47	92	311000	24.1
4	426	15	24	24500	1.81	82	313800	31.5
5	533	15	22	24500	2.16	80	314000	39.3



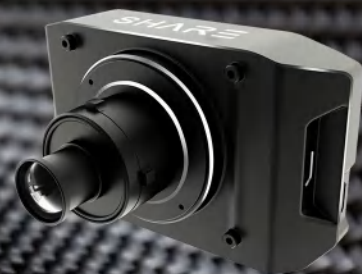
Model



SHARE 6100 X-PORT



SHARE 6100



SHARE 6100 PRO

Parameter

Camera

Focal Length	40 mm x 1 or 56 mm x 1 (Optional)
Effective Pixels	61MP
Sensor Size	Full Frame(35.7 mm x 23.8mm)
Exposure Interval	≥0.8s
Storage	256 GB
Power Supply	SkyPort
Power On / Off	Auto On / Off

General

Operating Temperature	-10°C~40°C
Humidity	95%
Size	136 x 76 x 61 mm
Weight	350 g

SHAR赛尔

www.shareuavtec.com



Official Website



Facebook



LinkedIn



Youtube

Vanson Choo

Oversea Sales Director

+86 137 9859 6007

vanson@shareuavtec.com

4F, Building 6A, Taihua Wutong, Hangkong Rd, Baoan Dist., Shenzhen, China